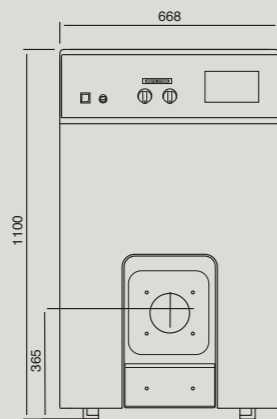
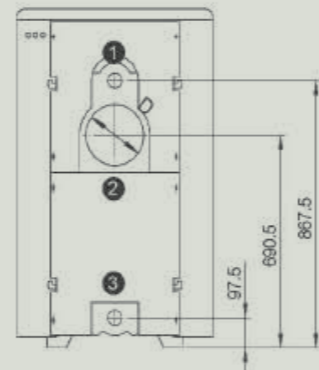
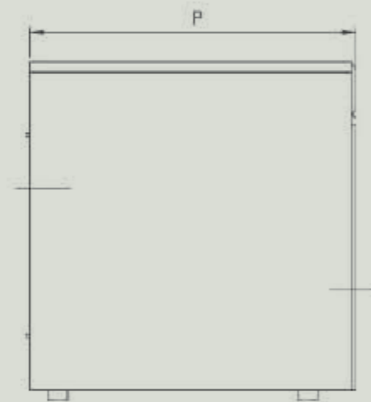


# TC200

Oil or gas-fired  
cast-iron boilers



- 1 System delivery
- 2 Fumes outlet
- 3 Systemreturn



Via Berardo Maggi 4  
25124 Brescia (BS), ITALY  
Tel. +39 345 243 4136  
[www.thermocalore.com](http://www.thermocalore.com)



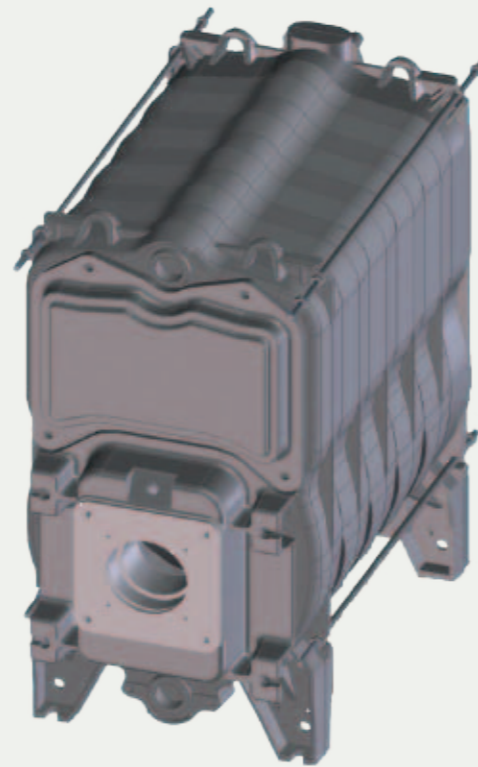
# TC200

## Cast iron boilers for heating

The **TC200** boilers are made of cast iron elements with innovative shape to guarantee high efficiency and long duration.

Aesthetically and internally renewed, they offer maximum efficiency respecting the most restrictive installation standards.

The particular dimensions of the combustion chamber have been optimised for medium high output use.



Model	number of Elements	Net output KW	Thermal output KW	Efficiency at Pn (80/60°C)	Useful efficiency at 30% of Pn	Dimensions			Weight Kg
						Height	Length	Depth	
TC200/ 6	6	80	89	90.0	91.0	1100	668	885	410
TC200/ 7	7	100	111	90.0	91.3	1100	668	1005	456
TC200/ 8	8	120	133	90.2	91.5	1100	668	1130	520
TC200/ 9	9	140	155	90.3	91.8	1100	668	1250	575
TC200/ 10	10	160	177	90.3	92.0	1100	668	1370	360
TC200/ 11	11	180	200	90.5	92.2	1100	668	1495	685
TC200/ 12	12	200	222	90.6	92.4	1100	668	1620	740

## Main Features

- High efficiency (efficiency Directive 92/42CEE)
- Low temperature classification.
- Designed and built for a maximum pressure of 5 bars.
- Double front panel and total rear cover that provides maximum structural strength.
- Body equipped with Cast Iron front doors for inspection and front cleaning, no need to remove the burner to clean the boiler.
- Body in EN GJL 200 Cast Iron made in compliance with TRD 702 German Standards and approved by TÜV Bayern.

## Control panel

1. Main Switch.
2. Thermostat adjustment 1 st stage.
3. Thermostat adjustment 2 st stage.
4. Boiler temperature thermometer display.
5. Heating safety thermostat.



## Technical Data

Description	Unit measure	TC200/6	TC200/7	TC200/8	TC200/9	TC200/10	TC200/11	TC200/12
Fuel		GAS / DIESEL						
Type of appliance		B23						
Flue temperature*	C°	~ 170						
Pressure at furnace	mbar	0.10	0.15	0.28	0.30	0.40	0.55	0.66
Chimney loss with burner	%	7.6	7.6	7.5	7.5	7.4	7.4	7.4
Loss at casing	%	1.5	1.4	1.4	1.2	1.2	1.1	0.9
Chimney loss with burner	%	See installed burner						
Temperature of exercise	C°	18 ÷ 80						
Minimum return temperature allowed	C°	37						
Max exercise pressure "PMS"	bar	5						
Electric power supply	V ~ Hz	230 ~ 50						
Maximum electric power input	W	Installed burner electric power						
Maximum flue flow rate	g/s	35	43.1	51.2	58	64.8	71.6	78.3
Furnace volume	dm³	27	86	101	116	131	145	159
Furnace diameter	mm	380						
Furnace length	mm	565	686	807	928	1049	1170	1291
Diameter of chimney fitting	mm	200						
Diameter of burner attachment	mm	130						
Pressure drop water side(Δt ~ 15°C )	mbar	8.0	11.0	17.0	25.0	31.0	39.0	50.0
Water storage in boiler	L	66.0	76.5	87.0	97.5	108.0	118.0	129.0

\*Fume temperature is measured with CO2 = 13% for gas oil - 10% for gas - Boiler flow temperature 80° C.